

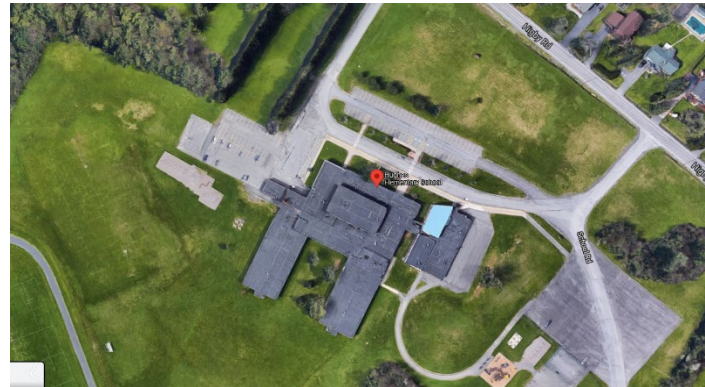


Proposed Capital Project



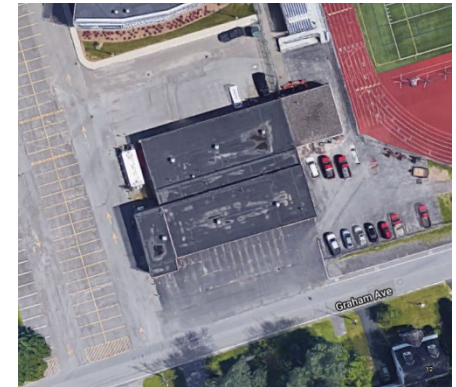
Myles Elementary School

Reroofing



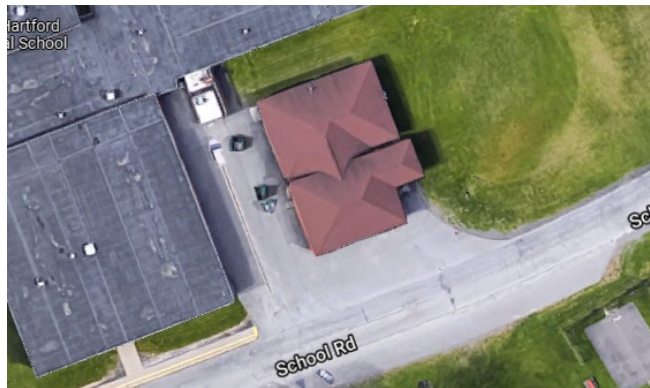
Hughes Elementary School

Reroofing



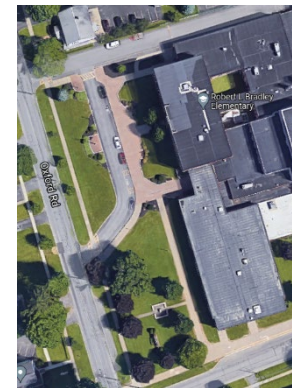
Bus Garage

Reroofing



Food Storage Building

Reroofing



Bradley Elementary School

Lighting Upgrades – Entrance Sign



Senior High School

Science Wing Air Conditioning – Swimming Pool Dehumidification – Gymnasium Flooring & Bleachers



Senior High School Athletic Complex

Turf & Track Upgrades - Backstop/Netting/Fencing Improvements - Stadium Lighting Upgrades – Tennis Court Improvements – Pavement & Sidewalks – Drainage Improvements



Perry Athletic Complex

Varsity Softball Field with Dugouts – Modified Softball Field – Track Improvements –
Modified Football Improvements – Modified Baseball Improvements

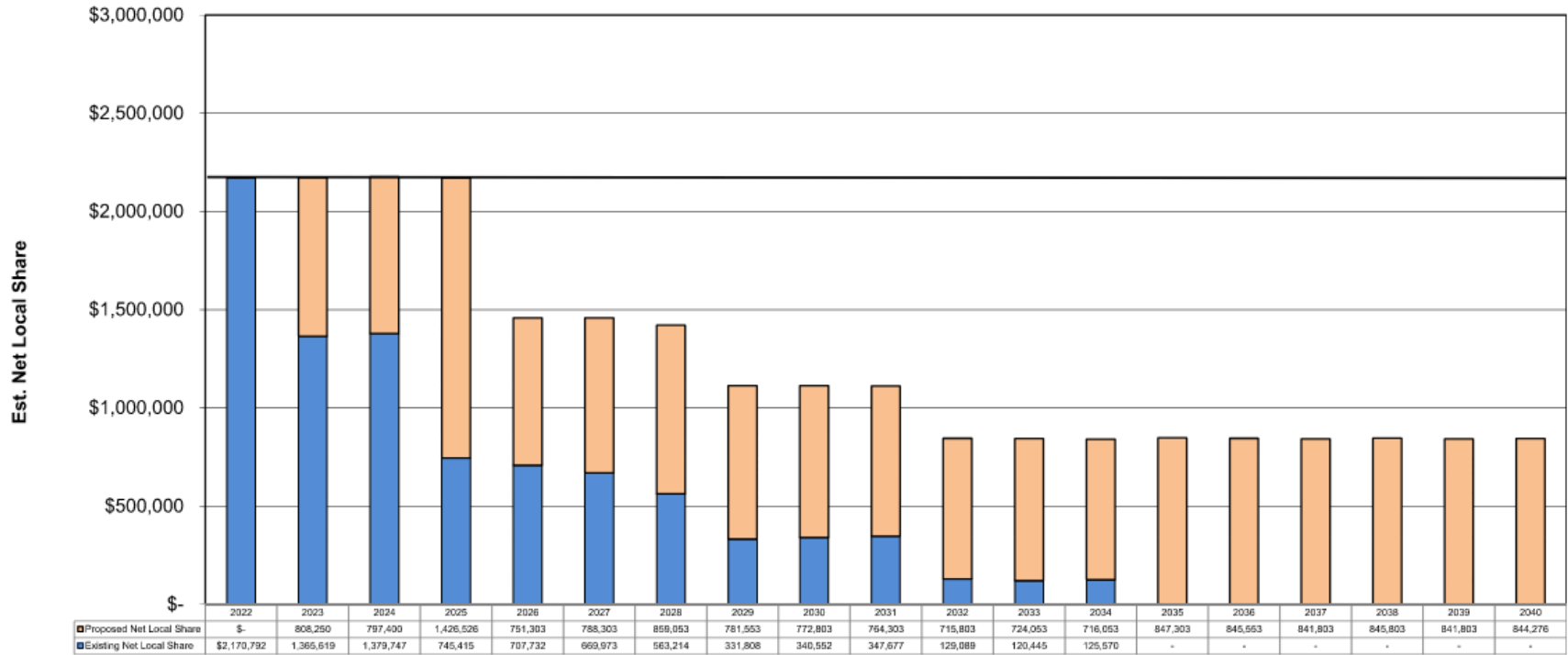


Perry Junior High School

Reroofing – Window Wall Replacement – Asbestos Abatement – HVAC System Upgrades – Boiler/Hot Water Replacement – Lighting Upgrades – Gymnasium/Pool Improvements



New Hartford Central School District
Estimated Net Local Share of Existing and Proposed Building & Bus Debt Service



Fiscal Year Ending June 30

mak/eew
Updated: 9/10/2021
Printed: 9/15/2021

Bernard P. Donegan, Inc.
10

TRIR - PRE & POST CP \$40M 9-14-21
BAR CHART - Summary-Bldg&Bu (2)



PROJECT TIMELINE



District Committees to Review Scope & Budget	03/3/21 - 10/7/21
BOE Reviews Project Scope & Budget	10/19/21
BOE Addresses SEQRA & Adopts Resolution	10/19/21
Project Promotion Phase	10/20/21 - 12/13/21
Advertisement Period (45 days)	10/29/21 - 12/13/21
Referendum VOTE	12/14/21
Design Phase	12/15/21 - 06/30/22
SED Review Phase (16 weeks +/-)	07/01/22 - 11/01/22
Bid Phase	12/01/22 - 01/19/23
Construction Phase (tentative)	04/03/23 - 11/01/25
Closeout Phase	December 2025



Questions & Answers