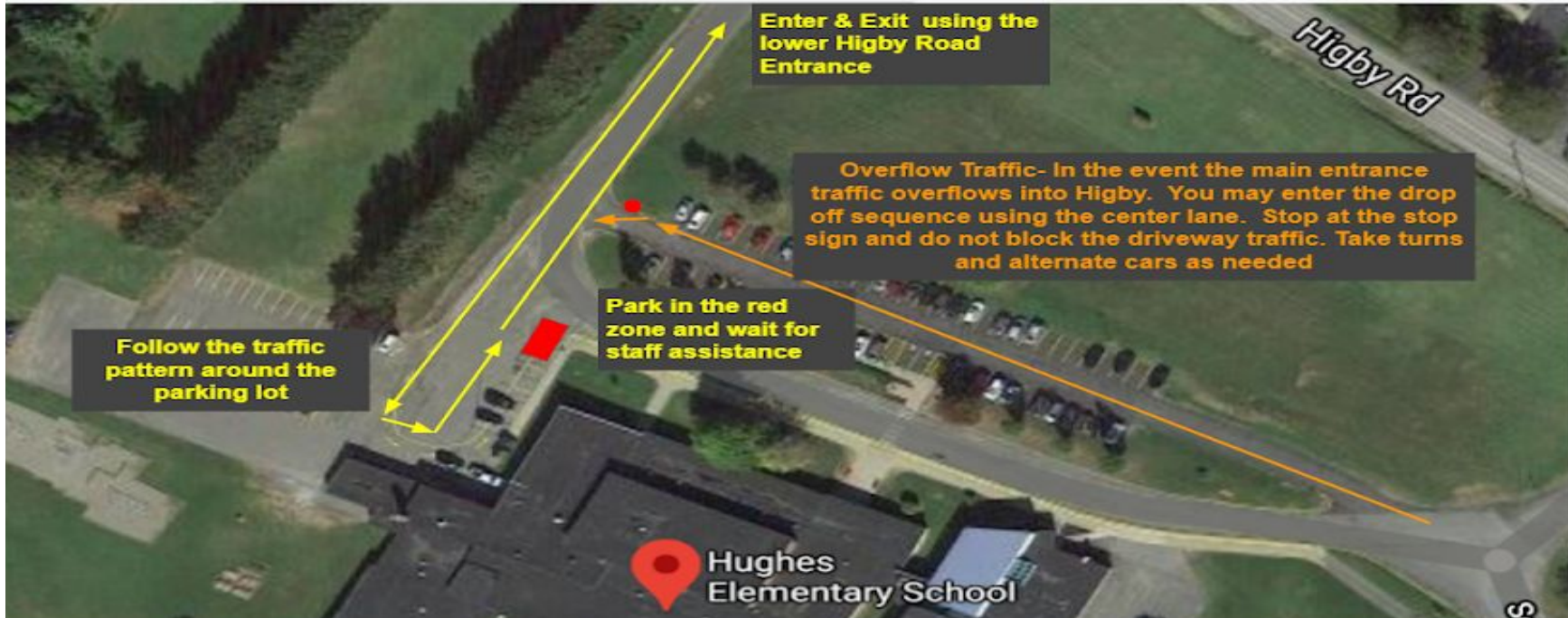


Student Drop-off/ Pick-up Procedures & Map
E.R. Hughes Elementary
2020-2021 School Year



Student AM Drop Off Procedures

- All cars must follow traffic pattern highlighted in this map
- Students will be dropped one car at a time
- Parents are required to assist children and buckling due to safety concerns
- A school staff member will greet students at the car and be directed to the entrance to complete a temperature check
- Parents are not permitted to walk students to the school entrance due to the restrictions in place at this time
- **Student drop off in the morning will begin at 8:30 AM**

Student Pick-up Procedures

- Students will be dismissed at 2:40PM to prepare for parent pick-up daily
- All cars must follow traffic pattern highlighted in this map
- A school staff member will greet you at the loading zone and confirm student pick-up
- Students will be dismissed one at a time or by car load group
- Parents are required to assist children and buckling due to safety concerns
- **Student pick up will begin at 2:40PM**